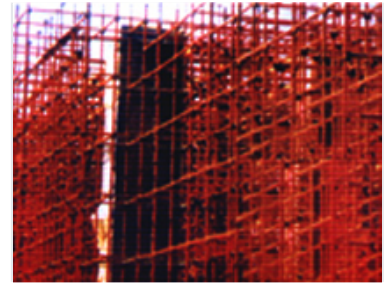


# Construction Scaffolding System

This scaffolding system provides a temporary structure for supporting workers and materials on construction sites. It creates a safe and stable platform for completing construction tasks at height.



## Product Overview

### Professional Construction Scaffolding System

This industrial-grade scaffolding system is engineered for large-scale construction, providing a robust and stable temporary support structure for high-rise and complex infrastructure projects. The system features a dense network of horizontal and vertical metal supports designed for maximum safety and load-bearing efficiency. It is suitable for diverse applications including building construction, structural installation, and large-scale industrial facility maintenance.

## Technical Standards

### Social Credit Rating

AAA Grade Enterprise

### Certifications

Quality Management System, Environmental Management, Occupational Health & Safety

## Operational Capabilities

### Suitable Applications

- High-rise buildings
- Steel structure installation
- Mechanical and electrical equipment assembly
- Industrial furnace and boiler installation
- Bridge and power infrastructure construction

### Key Performance Metrics

**100000 M3**

Daily Excavation/Blasting Capacity

**1.2 million M3**

Annual Concrete Production Capacity