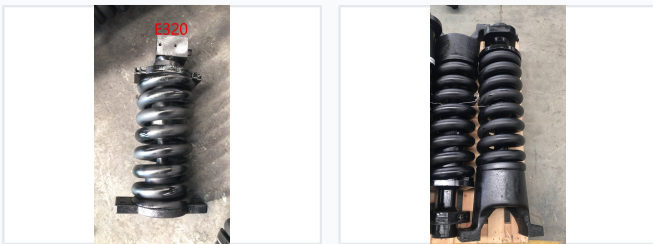


Construction Machinery Track Adjuster Assembly

This track adjuster assembly is designed for construction machinery. It maintains proper track tension, ensuring optimal performance and preventing premature wear.



ADDITIONAL IMAGES



Product Overview

Professional Track Adjuster Assembly

This heavy-duty track adjuster assembly is engineered for construction machinery, providing essential track tensioning and shock absorption. The robust construction includes a high-strength spring mechanism, cylinder, and mounting hardware, designed to ensure optimal performance and longevity in demanding operating environments. It is a critical component for maintaining proper track tension to prevent premature wear and mechanical failure.

Specifications

Key Components

- Recoil Springs
- Hydraulic Cylinder
- Piston
- Mounting Brackets
- Threaded Rod

Construction Details

Heavy-duty • High-strength material • Robust design

Manufacturing Expertise

Established production since 2003

Equipment Compatibility

Construction Machinery, E320