

# Compact Round Flow Ceiling Cassette Air Conditioner

This compact air conditioner features a round flow ceiling cassette design. It supports both inverter and on-off operation and is compatible with T1 and T3 ambient temperature conditions.




## Product Overview

**Product features**

**Cassette**


**3D Indoor Fan** D

Quiet operation by using optimized 3D Indoor fan.



**Wire Control (optional)** E

Wire control is available, especially for hotel rooms, offices, etc.



Optimized 3D indoor fan ensures quiet operation, with optional wire control available for commercial environments.

### Compact Round Flow Ceiling Cassette

This compact round flow ceiling cassette air conditioner is engineered for both residential and commercial spaces, featuring a space-saving design that fits standard 600mm x 600mm ceiling tiles. The unit includes an integrated E-box for simplified maintenance and supports flexible configurations, including twin systems where one outdoor unit connects to two indoor units. With advanced features like fresh air intake and an optimized 3D fan, it ensures efficient, quiet, and comfortable climate control.

#### Key Features

Compact Design, Fresh Air Intake, Twin Combination, E-box Inside, 3D Indoor Fan

## Cooling Performance

### Cooling Specifications

**12000 Btu/h**  
Capacity

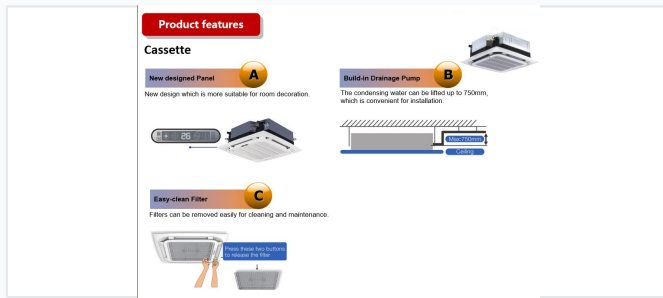
**1260 W**  
Input Power

**2.79 W/W**  
EER

### Electrical Requirements

220~240V / 1Ph / 50Hz

## Indoor Unit Details



Features a built-in drainage pump capable of lifting water up to 750mm and an easy-access filter for simplified maintenance.



Designed for easy maintenance with a hook mechanism that allows for indoor checking without full panel disassembly.

### Dimensions

Component	Dimensions (mm)
Body	570 x 570 x 260
Panel	647 x 647 x 50

### Indoor Coil Specifications

- Number of rows: 1
- Tube pitch: 21mm
- Row pitch: 13.37mm
- Fin spacing: 1.3mm

**Built-in Drainage Pump Lift**

750 mm

**Fan Motor Speed (Hi/Med/Lo)**

780/670/540/430 r/min