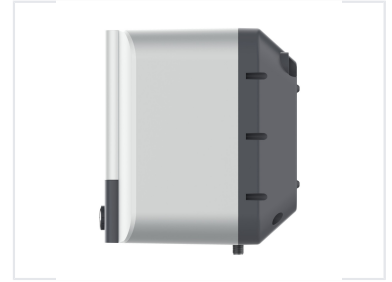


Compact Electric Water Heater for Kitchen Use

This compact electric water heater is designed for kitchen use. It features a high impact resistant ABS body and is available in multiple colors.



ADDITIONAL IMAGES



Overview

Efficient Kitchen Hot Water Solution

This compact electric water heater is specifically designed for kitchen environments, offering a space-saving solution for on-demand hot water. Featuring a 5-star BEE energy efficiency rating and a high-impact ABS body, it combines durability with low operating costs. The unit supports versatile installation both above and under the sink to suit various cabinetry layouts.

Key Features

Core Benefits

- 5-star BEE standard energy saving
- High impact resistant ABS body
- Under or above sink installation versatility
- H/R Light indicator available
- New generation eco-friendly insulation materials
- Quadro-layer enameled SPCC tank

Tank Technology

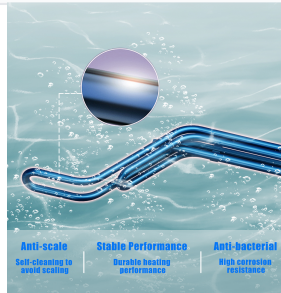


Comparison showing the superior durability and 67% reduced leakage risk of the single weld line SPCC tank design.

Inner Tank Specifications

Feature	Specification
Material	Customized thickened SPCC
Coating	Quadro-layer enamel (Blue Diamond)
Weld Design	Exclusive Single Weld Line
Leakage Risk Reduction	Over 67% compared to triple weld designs
Application	Suitable for high-rising/high-pressure conditions

Heating Element



High-performance heating element featuring anti-scale, anti-bacterial, and self-cleaning properties for extended service life.

Heating Element Features

Anti-scale, Anti-bacterial, Self-cleaning, Corrosion Resistant, Durable Performance

Design & Customization

Customization

- Multiple color options for outer shell
- Multiple color options for service panel
- Adjustable temperature control knob (Low to High)

Energy Efficiency

Energy Rating

5 Stars

BEE Star Rating