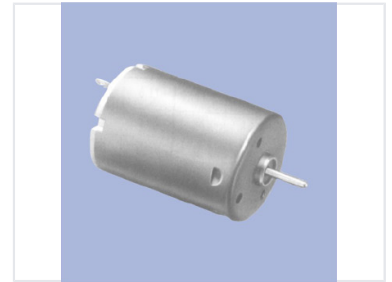


Compact DC Motor

This compact DC motor features a cylindrical housing with integrated mounting holes. The metal casing provides durability and protection for the internal components.



Product Overview

Compact DC Motor

This compact DC motor is designed to provide reliable rotary motion for a wide range of applications. Featuring a durable cylindrical metal housing, it is built to protect internal components while maintaining a small footprint. The unit includes integrated mounting holes for easy installation and clearly defined terminals for efficient electrical connection.

Physical Characteristics

Housing Material	Metal
Form Factor	Cylindrical
Mounting Features	Integrated mounting holes

Connectivity

Connection Type	Electrical terminals
Shaft Configuration	Single-ended shaft