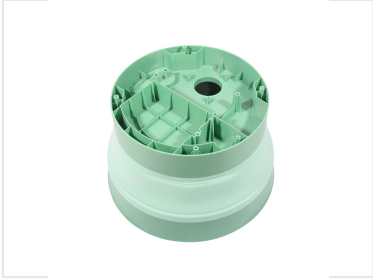
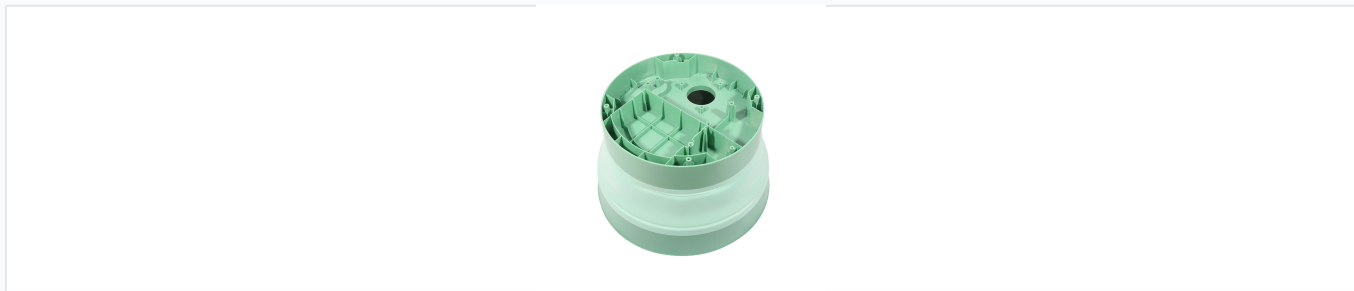


Collapsible Over Mold

This collapsible over mold features a segmented design for space-saving storage. Constructed from durable material, it is ideal for efficient material processing in various molding applications.



Product Overview



Detailed view of the collapsible overmold component showing its precision construction and flexible structure.

Precision Over Mold Solutions

This collapsible over mold is engineered for high-precision manufacturing applications, offering versatility and efficiency. Designed with robust materials, it supports a wide range of production requirements, from automotive to consumer electronics. The mold features a flexible, collapsible design that optimizes storage and handling, while maintaining high structural integrity for consistent, high-quality output.

Technical Specifications

Mould Base Materials	P20, 45#, 4CR13
Cavity Materials	P20, P20H, 718, 718H, 2738, Nak80, S136, SKD61, 8407, H13, 2343, 2344, 2311, 2312, 2379, 2316, 2093, 2767
Mould Life	0.2-2 million Shots
Tonnage Range	3600 T
Design Software	UG, Pro-E, AutoCAD, CATIA
Compatible Materials	PS, ABS, PP, PVC, PMMA, PBT, PC, POM, PA66, PA6, PBT+GF, PC/ABS, PEEK, HDPE, TPU, PET, PPO

Performance Metrics

Key Production Metrics

30 days

Minimum T1 Time

40 days

Maximum T1 Time

Industry Applications

Industries Served

Automotive • Communications • Electronics • Home Appliances • Household Products