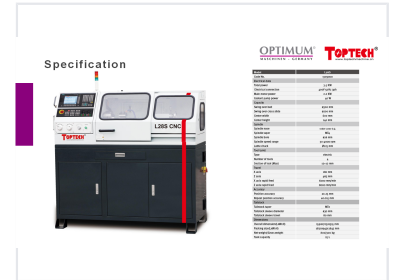
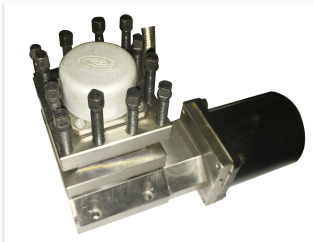


# CNC Lathe Machine for Small-Batch Machining

This CNC lathe machine is designed for small-batch machining and education. It features a high-speed spindle unit, servo drive, and linear guide for precise and efficient operation.



## ADDITIONAL IMAGES



## Overview

### Compact Precision CNC Lathe

This CNC lathe machine is a high-speed, precision-engineered solution specifically designed for small-batch machining and educational environments. It features a robust construction with linear guides and ball screws on two axes, ensuring reliable performance for high-accuracy metal cutting operations. Compact and lightweight, it conforms to European Safety Standards, making it an ideal choice for manufacturing workshops and technical training.

## Key Features

### Performance Highlights

**4000 rpm**

Max Spindle Speed

**300 mm**

Swing Over Bed

**2.2 kW**

Main Motor

**4 Slots**

Tool Turret

### Standard Equipment

- Servo-spindle and Servo-drive
- Linear guide and ball screws
- Automatic lubricating system
- Coolant system
- LED work lamp
- European Safety Standard compliance

## Machining Capacity

Swing Over Bed	300 mm
Swing Over Cross Slide	200 mm
Center Width	600 mm

## Spindle & Tooling

Spindle Bore	26 mm
Spindle Taper	MT4
Turret Type	Electric 4-tool turret

## Travel & Accuracy

Axis Travel (X/Z)		
Axis	Travel	Rapid Feed
X Axis	180 mm	6000 mm/min
Z Axis	465 mm	8000 mm/min
Repeat Position Accuracy	0.015 mm	

## Electrical & Dimensions

Electrical Connection	400V 50Hz 3ph
Net Weight	800 kg
Overall Dimensions (LxWxH)	1590 x 705 x 1515 mm

## Compliance

Safety Standards	European Safety Standard, CE Compliant
------------------	--