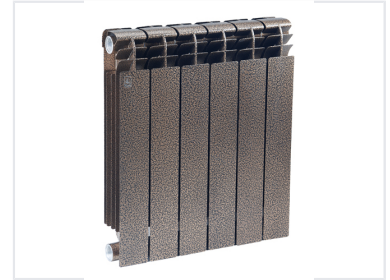


# Circle-Top Aluminum Radiator for HVAC Systems

This high-efficiency aluminum radiator is designed for optimal heat dissipation. Its circle-top design enhances aesthetics and performance, making it suitable for residential and commercial heating systems.



## Product Overview

### High-Efficiency HVAC Solution

This circle-top aluminum radiator is engineered for superior thermal conductivity and efficient heat dissipation in both residential and commercial settings. Its modular design allows for custom heat output configurations to meet specific environmental demands. Finished in an elegant bronze coating, this unit combines durable, corrosion-resistant performance with a refined aesthetic.

## Technical Specifications

Material	Aluminum
Finish	Bronze
Design Features	Circle-top design, Modular sections, Corrosion resistant

## Installation Details

### Compatible Systems

- Residential heating systems
- Commercial heating systems

Connection Type	Threaded ports (top and bottom)
-----------------	---------------------------------