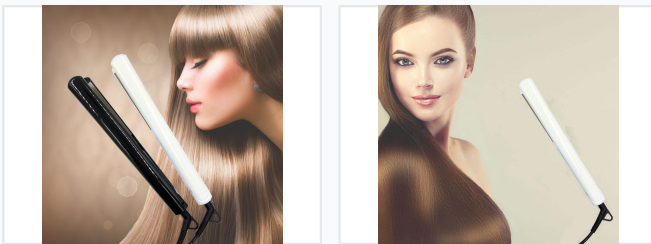


# Ceramic Plate Hair Straightener with Adjustable Temperature

This professional hair straightener features ceramic plates for even heat distribution and smooth gliding. Designed with a slim profile, it offers adjustable temperature settings and a swivel cord for tangle-free operation.



## ADDITIONAL IMAGES



## Product Overview

### Professional Ceramic Hair Straightener

This professional-grade hair straightener utilizes negative ion technology to minimize heat damage while delivering smooth, bright results. Designed with high-quality ceramic plates, it ensures even heat distribution for consistent styling performance. The ergonomic, slim profile allows for versatile styling, including straightening, curling, and wave creation, making it an essential tool for various hair types.

## Technical Specifications

Plate Material	Ceramic
Heating Technology	Rapid heating system
Temperature Control	Yes
Voltage Compatibility	Universal voltage

## Features

### Usability Features

- Swivel cord for tangle-free operation
- Ergonomic design
- Slim profile for easy handling

### Available Colors

Black • White

### Safety Features

Automatic shut-off, Heat-resistant housing