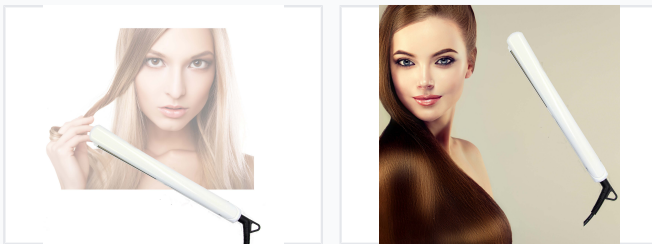


Ceramic Hair Straightening Iron

This hair straightening iron is designed with ceramic-coated plates for even heat distribution. It features rapid heating and adjustable temperature settings suitable for all hair types.



ADDITIONAL IMAGES



Product Overview

Professional Ceramic Hair Straightener

This professional-grade hair straightening iron is designed to deliver salon-quality results with ease. Featuring advanced MCH ceramic heating technology, it offers rapid heat-up times for efficient styling. The tourmaline-coated plates ensure smooth, even heat distribution to minimize damage, while the integrated anion technology helps reduce static for a sleek, glossy finish.

Technical Specifications

Heating System	MCH Ceramic Fast Heating
Plate Material	Tourmaline Ceramic
Cord Type	360-degree swivel cord

Features & Benefits

Key Features

- Digital temperature display
- High concentration anion technology for anti-static
- Rapid heating system
- Ergonomic handle design
- Tangle-free swivel cord

Suitable For	Professional Salon Use, Home Use, All Hair Types
--------------	--