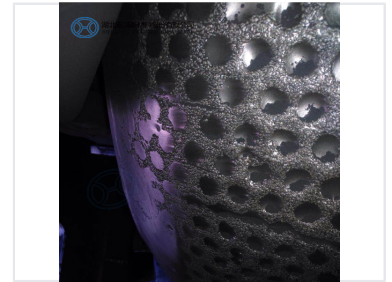
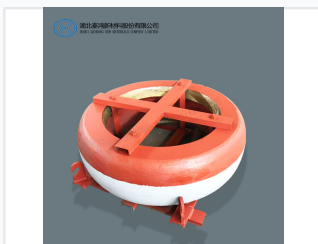


# Cement Mill Ceramic Roller Tyre

This roller tyre is made from a metal matrix composite material of alloy and ceramic, produced with a special casting and heat treatment process. The ceramic and metal composition provides wear resistance and toughness, prolonging the service life and reducing maintenance.



## ADDITIONAL IMAGES



## Product Overview

### High-Performance Ceramic Roller Tyres

These wear-resistant MMC roller tyres are specifically engineered for cement plant raw mills and cement mills, providing a critical solution for demanding mining environments. Designed to offer a 10% longer lifespan compared to standard domestic alternatives, they serve as a high-performance replacement for imported components. These parts ensure efficient and reliable operation during the intensive grinding processes required in cement production.

## Performance Highlights

### Lifespan Improvement

**10 %**

Longer Lifespan

## Technical Compatibility

### Applications

- Cement Plant Raw Mills
- Cement Mills
- Vertical Roller Mills
- Mining Machinery Spare Parts

### Compatible Mill Types

FL Smidth ATOX, Loesche LM, GEBR. PFEIFFER, MPS, RM, CKP, MLS, MPF, TRM, HRM, ZGM, HP

## Product Features

### Material Property

Wear-Resistant • Ceramic-Metal Composite (MMC) • High Durability

### Available Components

- Roller Segments
- Table Segments
- Liners
- Wear Parts

## Global Reach

### Exported To

- Russia
- Germany
- Pakistan
- Costa Rica
- Argentina
- Greece