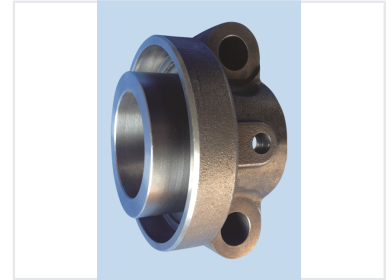
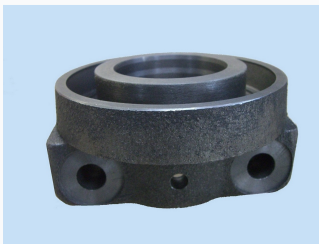


Cast Iron Undercarriage Mounting Bracket

This cast iron undercarriage bracket is designed for robust support and stability. It features a circular mounting platform with multiple mounting holes for versatile installation.



ADDITIONAL IMAGES



Product Overview

Heavy-Duty Undercarriage Support

This cast iron undercarriage mounting bracket is engineered for robust support and stability in heavy-duty construction machinery. Designed to withstand significant stress and vibration, it provides a reliable foundation for demanding environments. The component features a precision-engineered circular mounting platform with a central raised ring, ensuring secure attachment and accurate alignment for your equipment.

Technical Specifications

Mounting Features

- Circular mounting platform
- Central raised ring for alignment
- Multiple mounting holes for versatile installation

Material Grade	600-3
Material	Cast Iron

Application

Primary Application	Construction Machinery, Heavy-Duty Support, Undercarriage Assembly
---------------------	--