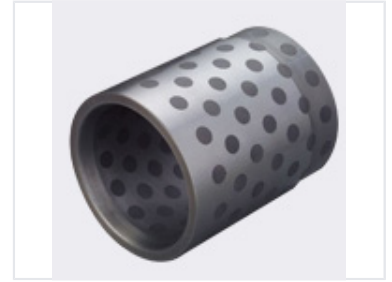


# Cast Iron Self-Lubricating Embedded Bushing

These bushings are constructed from a cast iron-based metal, featuring embedded special lubricants. The base metal is designed to withstand high loads, while the solid lubricants ensure self-lubrication.



## Product Overview

### High-Performance Self-Lubricating Bushing

The 250# material (RCB-250) bushing is engineered from a durable cast iron base metal with specialized solid lubricants embedded directly into the structure. This design allows the bearing to withstand high-load applications while providing continuous, maintenance-free self-lubrication. It is specifically optimized for reliable performance in extreme temperature environments and low-speed operational conditions.

## Technical Specifications

### Lubrication Method

Embedded Solid Lubricant • Self-Lubricating

Material Grade	250# (RCB-250)
Base Material	Cast Iron

## Performance Features

### Key Performance Indicators

**1 High**

Load Capacity

**1 Low**

Speed Rating

### Operating Conditions

- Extreme high temperatures
- Extreme low temperatures
- Maintenance-free operation
- No pre-lubrication required