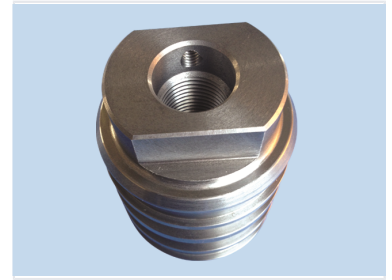
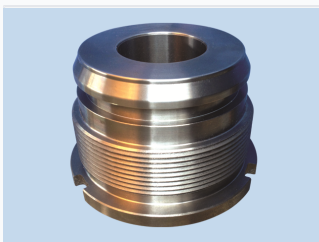


# Cast Iron Construction Machinery Piston

This cast iron piston is designed for use in construction machinery. It features circumferential grooves for enhanced sealing and a robust base for secure mounting.



## ADDITIONAL IMAGES



## Overview

### High-Performance Construction Machinery Piston

This cast iron cylinder piston is precision-engineered specifically for the demanding requirements of construction machinery. Designed to withstand high pressure and extreme temperature conditions, it ensures reliable performance and an extended service life. The robust construction and specialized sealing features make it an ideal component for heavy-duty hydraulic or engine applications.

## Key Features

### Performance Highlights

**1 Cast Iron**  
Material

**1 High**  
Durability

## Technical Design

### Design Characteristics

- Central bore for precise alignment
- Multiple circumferential grooves for enhanced sealing
- Robust base with integrated mounting slots
- Threaded internal bore for secure connection

## Material & Construction

### Manufacturing Process

High-Precision • Precision-Engineered

Primary Material

Cast Iron

## Application

Target Industry	Construction Machinery
Operating Environment	High Pressure, High Temperature, Heavy Duty