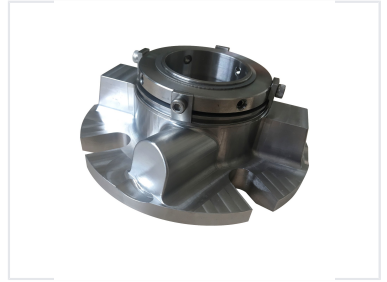
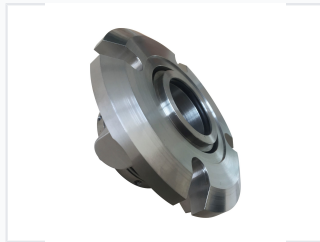
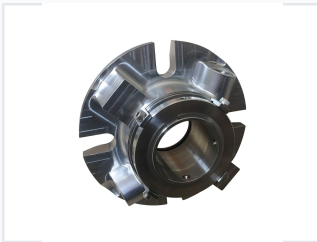


Cartridge Mechanical Seal for Water Pumps

This cartridge mechanical seal is designed for water pump applications. It offers wear resistance and superior sealing effects.



ADDITIONAL IMAGES



Product Overview

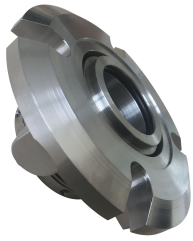
Description

Technical diagram of the J5610-43 cartridge mechanical seal.

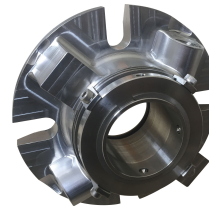
J5610-43 Cartridge Mechanical Seal

The J5610-43 is a robust cartridge mechanical seal specifically engineered for water pump applications. Designed to minimize downtime, its cartridge configuration allows for easy installation and maintenance. Constructed from high-quality materials, this seal provides superior wear resistance, low friction, and reliable sealing effects to ensure optimal pump efficiency and longevity in demanding environments.

Technical Specifications



Close-up view of the mechanical seal components designed for high-pressure water pump environments.



Precision-machined housing and sealing faces for reliable, leak-free operation.

Model Number	J5610-43
Material	ca/sic/nbr
Dimensions	43 mm
Weight	0.015 kg

Performance Metrics

Performance Ratings

2 Mpa

Max Pressure

3000 rpm

Max Speed

Features & Applications

Primary Applications

- Water pumps
- Automotive cooling systems
- Electric power generation projects

Key Features	Wear resistant, Superior sealing, Low friction, Easy replacement, Customizable
--------------	--