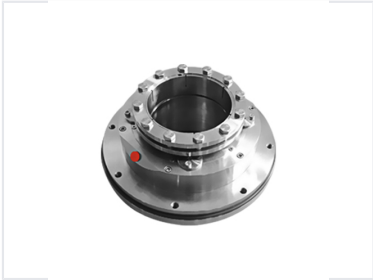
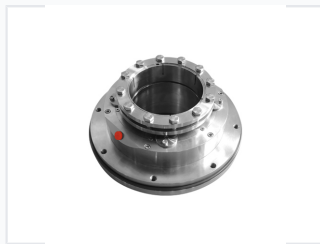
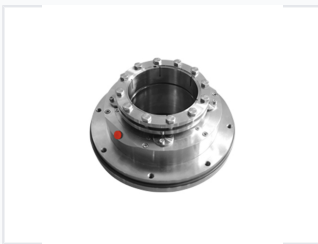


Cartridge Mechanical Seal for Industrial Pumps

This cartridge mechanical seal is designed for industrial pumps and rotating equipment. It provides a reliable sealing solution, preventing leakage and ensuring efficient operation.



ADDITIONAL IMAGES



Product Overview



High-Performance Cartridge Mechanical Seal

This cartridge mechanical seal is engineered for demanding power industrial applications, offering superior sealing effects and low friction for enhanced efficiency. Designed with wear-resistant materials like Silicon Carbide and Stainless Steel, it ensures a long service life even in high-pressure and high-temperature environments. The pre-assembled cartridge design simplifies installation and maintenance, significantly reducing operational downtime for industrial pumps and rotating equipment.

Technical Specifications

Description

Speed Rating

3000 rpm

Max Speed

Model Number

HRM-142

Dimensions

142 mm

Materials & Construction



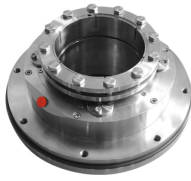
Key Performance Features

- Wear resistant construction
- Superior sealing effects
- Low friction operation
- Easy replacement cartridge design
- Customized mold options
- Corrosion resistant components

Materials

S.S (Stainless Steel), SIC (Silicon Carbide), V (Viton/Fluororubber)

Applications



Compatible Equipment

- Industrial Pumps
- Submersible Pumps
- Marine Pumps
- Auto-cooling Pumps
- Rotating Equipment
- HVAC&R Systems

Primary Industry

Power Industrial

Service & Support

Customization & Design

- Free drawing provided with mass production
- ODM Service available
- OEM Service available
- Customized mold development

Quality Control

- Raw material inspection
- 100% testing before packing
- Random testing before delivery
- 1-year quality guarantee

After-Sales Support

Video Technical Support, Spare Parts Replacement

Logistics

Accepted Payment

T/T • Western Union • PayPal

Packaging

Exquisite rust-proof packaging with special small boxes and copy paper.