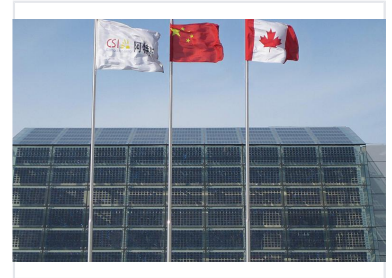


Building Integrated Photovoltaic Module

This building-integrated photovoltaic (BIPV) module generates solar power. The module type is BIPV-110W Poly and the system size is 15 KWp.



Product Overview

Building Integrated Photovoltaic (BIPV) Module

This Building Integrated Photovoltaic module offers a seamless energy solution for modern architectural facades. Designed with polycrystalline technology, it effectively captures solar energy while serving as a structural component of the building envelope. Ideally suited for large-scale energy projects, this module combines renewable power generation with sophisticated exterior aesthetics.

Technical Specifications

Module Type	BIPV-110W Poly
Rated Power Output	110 W

Project Details

System Capacity

15 KWp
System Size

Completion Year	2009
-----------------	------

Location

Installation Site	LuoYang, China
-------------------	----------------

Certifications and Features

Key Features	Building Integrated, Polycrystalline, Facade Ready
--------------	--