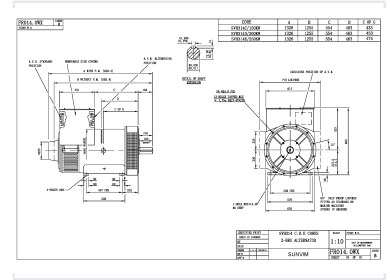


Brushless Marine Generator

This brushless marine generator is engineered to deliver consistent and efficient power output. It is built with high-quality materials and components, offering superior resistance to corrosion and wear.



ADDITIONAL IMAGES



Product Overview

Robust Marine Power Solutions

The SVH Series brush-less marine generators are engineered for high reliability and stable performance in demanding maritime environments. Featuring advanced technical design with corrosion-resistant construction and salt fog protection, these units ensure consistent power output for critical onboard systems. Designed for flexibility, they offer multiple configurations to meet diverse marine operational requirements.

Technical Specifications

Performance Metrics

5 KW

Minimum Power

1500 KW

Maximum Power

Design Specifications

- 4-pole and 6-pole configurations
- Single bearing and double bearing structure options
- Advanced AVR precision
- Drip-proof louver design for marine safety
- Brush-less construction for low maintenance

Model Dimension Comparison (mm)

Model	Length	Core A	Core B
SVH314C/150KW	1326	554	463
SVH314D/200KW	1326	554	463
SVH314E/250KW	1326	554	463

Compliance & Certification

Safety and Quality Certifications

CE • SASO • SABS

International Standards

ISO 9001, ISO 14000, ISO 18000