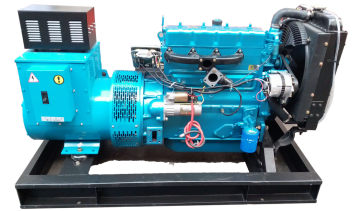
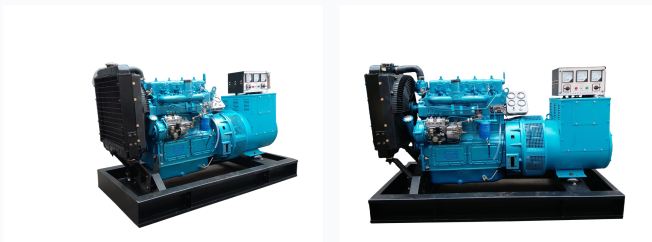


Brushless Diesel Generator Set

This diesel generator set features a brand new brushless alternator. It has a single bearing, IP21/22 protection, and H insulation class.



ADDITIONAL IMAGES



Overview



PACKING



Secure, moisture-controlled packaging ensures equipment arrives in optimal condition.



PROJECT



Versatile power solutions suitable for telecommunications, construction, and residential infrastructure.

Reliable Diesel Power Generation

This brushless diesel generator set is engineered for dependable power supply across various industrial and commercial applications. Featuring a robust engine and a high-efficiency brushless alternator, the unit is mounted on a heavy-duty steel base frame with integrated vibration dampening to ensure stable operation. Each unit comes equipped with comprehensive filtration systems and an 8-hour base fuel tank, providing a ready-to-use solution for critical power needs.

Technical Specifications

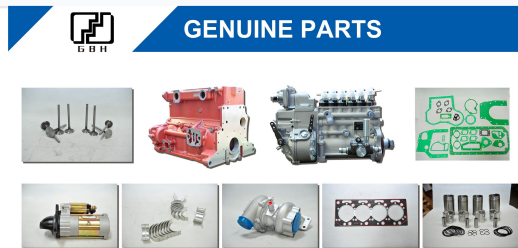
Generator Model Specifications

Model	Standby Power (KVA)	Rated Current (A)	Engine Model	Output (kW)	Dimensions (mm)
HRC-20CF	27.5	36	ZH4100D	33	1800*840*1250
HRC-24CF	33	43.2	ZH4100D	33	1800*840*1250
HRC-30CF	41.25	54	ZH4100ZD	45	1800*840*1280
HRC-40CF	55	72	R4105ID	50.6	1850*750*1350
HRC-50CF	68.75	90	R4105ZD	61.6	1850*750*1350

Electrical Standards

Brushless, Single Bearing, IP21/22, H Insulation Class

Components & Accessories



High-quality genuine components including filters, pistons, and gaskets ensure long-term reliability and performance.

Standard Equipment

- Heavy duty steel base frame
- Vibration damper system
- Industrial silencer with flexible bellow and elbow
- Air, oil, and fuel filtration system
- Electric start system
- 24V charger
- 12/24V storage batteries
- Standard tool kits and manuals

Available Options

Automatic Transfer Switch • ABB/Schneider Breaker • Water Heater • Lub-oil Heater • Fuel Level Sensor • Water-Fuel Separator • External Daily Fuel Tank

Compatible Controllers

Deepsea, DEIF, ComAP, Woodward

Performance Metrics

Fuel Tank Autonomy

8 hours

Run Time

Radiator Cooling Capacity

40 °C

Open Type

50 °C

Soundproof Type