

Brushless DC Motor with Flat Cable Connector

This brushless DC motor is designed for various applications. It features a 4-pole design and operates on a 12V, 3-phase power supply.



Overview

High-Performance Brushless DC Motor

The VBLM14 is a compact and efficient brushless DC motor designed for high-speed applications such as household electrical appliances. Featuring a 4-pole, 3-phase design, it offers a balance of high rotational speed and low noise operation at 50dB. Its integrated flexible flat cable connector and precision-engineered metallic housing ensure easy integration and reliable performance in space-constrained environments.

Key Performance Metrics

Performance Highlights

10800 rpm

Rated Speed (Load)

12 V

Rated Voltage

50 dB

Noise Level

Electrical Specifications

Rated Voltage	12 V
No-Load Current (Max)	100 mA
Phase	3-Phase
Poles	4

Mechanical Performance

No-Load Speed	7200 rpm
Rated Speed under Load	10800 rpm

Physical Dimensions

Mounting Hole Specification	3 x M2 x 0.4 Thru
Max Screw Insertion Length	1.7 mm
Housing Diameter	13.84 mm
Load Position	10.05 mm

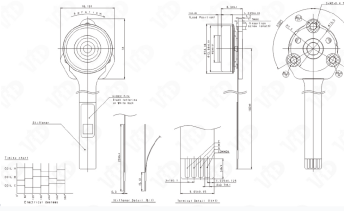
Features & Construction

Connector Type	Flexible Flat Cable with Stiffener
Key Features	Low Noise, Brushless Design, Compact Form Factor, High Speed, Metallic Housing

Technical Details

品名	零件号	规格	额定电压	额定功率	额定转速	重量
VBLH4	48	刷	12V	100W	1500rpm	0.5kg

规格参数 Specification



Detailed technical drawing showing motor dimensions, terminal details, and electrical timing charts.

Coil Timing

- Coil A Timing
- Coil B Timing
- Coil C Timing
- 120° Electrical Degrees