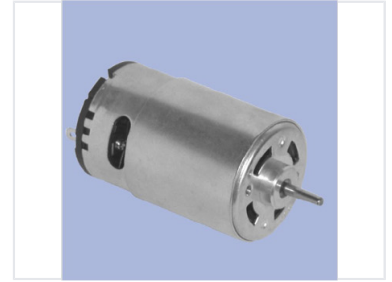


# Brushed DC Motor with Metal Housing

This high-performance brushed DC motor is designed for diverse applications. Its robust metal housing ensures durability and efficient heat dissipation.



## Product Overview

### High-Performance Brushed DC Motor

This brushed DC motor is engineered for reliability and efficient performance across a variety of electromechanical applications. Featuring a robust metal housing, it provides excellent durability and superior heat dissipation during operation. Its compact design and precision-engineered shaft make it an ideal choice for robotics, automation systems, and other projects requiring consistent rotational motion.

## Key Features

Key Features
Metal Housing, Long Lifespan Brushes, Optimized Armature, Compact Design

## Applications

### Suitable Applications

- Robotics
- Automation Systems
- Electromechanical Systems