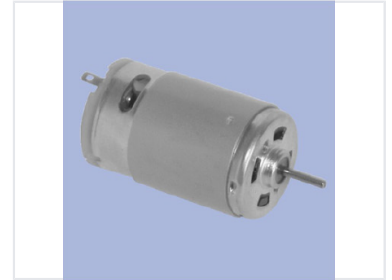


Brushed DC Electric Motor

This compact brushed DC electric motor features a cylindrical housing and a shaft extending from one end. It operates on direct current and provides reliable performance for a wide range of loads.



Product Overview

Brushed DC Electric Motor

This compact brushed DC electric motor is designed for reliable rotational motion in a variety of applications, including robotics, automation, and hobby projects. It features a durable cylindrical housing and a standard shaft for power transmission, ensuring consistent performance under various load conditions. The motor operates on direct current, providing a straightforward solution for systems requiring efficient and dependable mechanical power.

Technical Specifications

Key Design Features

- Compact cylindrical housing
- Standard power transmission shaft
- Direct current operation
- Durable construction for demanding environments

Motor Type	Brushed DC
Common Applications	Robotics, Automation, Hobby Projects