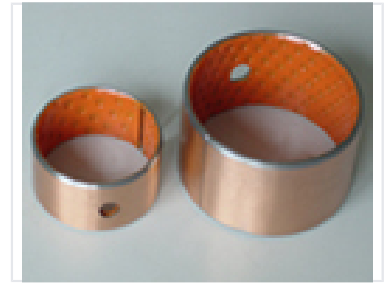


# Bronze Sleeve Bushings with Lubrication Hole

These bronze bushings are suitable as plain bearings in machinery. The bushings feature a bronze or copper alloy outer shell and a textured inner lining, with one bushing containing a lubrication hole.



## Product Overview

### Precision Bronze Sleeve Bushings

These bronze sleeve bushings are designed for high-performance plain bearing applications in heavy-duty machinery. Featuring an integrated lubrication hole, they ensure consistent performance and reduced maintenance in demanding industrial environments. Their robust construction makes them an ideal choice for critical rotating or sliding components in automotive, agricultural, and general industrial equipment.

## Technical Specifications

### Bearing Type

Plain Bearing • Sleeve Bushing

### Material

Bronze or Copper Alloy

### Key Features

Lubrication Hole, Low-friction Lining, Wear Resistant, Sleeve Geometry

## Applications

### Typical Applications

- Automotive Systems
- Agricultural Machinery
- Industrial Equipment
- General Rotating Assemblies