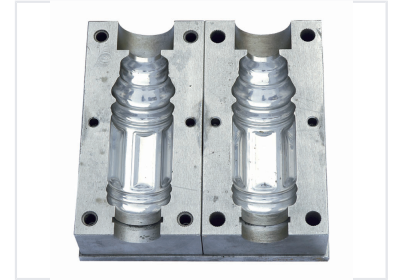


Bottle Forming Mold

This mold is designed for manufacturing plastic or glass bottles. It features intricate internal channels for efficient cooling and precise shaping.



ADDITIONAL IMAGES



Product Overview

Precision Bottle Manufacturing Solution

This precision-engineered mold is designed for high-volume production of plastic bottles, ensuring consistent quality and dimensional accuracy. Constructed from durable metal alloys, it features advanced internal cooling channels and robust alignment mechanisms to optimize the molding cycle. The system is built for seamless operation, facilitating efficient material injection and reliable demolding for industrial manufacturing environments.

Technical Specifications

Key Features

- Internal cooling channels
- Robust alignment pins
- Precision machining
- Integrated ejection mechanisms

Application Suitability

High-Volume Production • Plastic Bottle Manufacturing • Industrial Use

Cavity Configuration

Two-cavity design

Construction Material

Durable Metal Alloy, Steel/Aluminum