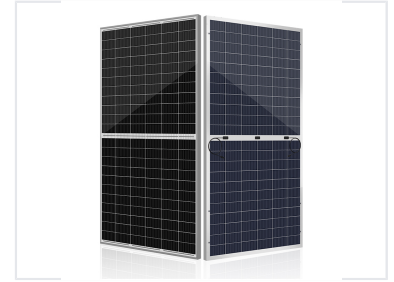


Bifacial Half-Cell Solar Module

This half-cell bifacial module combines high-efficiency bifacial technology with half-cell technology. It yields up to 30% more energy from back side power generation, depending on the albedo/reflectivity of the project site.



Product Overview

High-Efficiency Bifacial Technology

This advanced half-cell bifacial module harnesses light from both front and rear surfaces, yielding up to 30% additional energy depending on site reflectivity. The dual-glass construction is engineered to minimize micro-cracks and environmental degradation while maintaining superior performance at low irradiance. By reducing LCOE and BoS costs, this module serves as an ideal solution for utility-scale and commercial projects seeking to maximize ROI.

Performance Metrics

Efficiency by Surface Type

17 % White Painted Ground	8 % Sand	4 % Grassland	3 % Water
-------------------------------------	--------------------	-------------------------	---------------------

Potential Energy Yield Increase	30 %
--	-------------

Technical Specifications

Key Design Benefits

- Half-cell technology reduces internal resistance
- Dual-glass structure prevents snail trails and UV aging
- Parallel design minimizes shading impact
- Tempered AR-coated glass reduces weight

Front/Rear Glass Thickness	2 mm
Safety Classifications	Fire Class A, Anti-PID