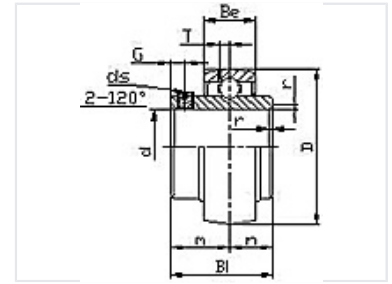


# Bearing Unit for Industrial Machinery

This bearing unit is designed for machinery and industrial applications. Its robust construction is suitable for demanding environments, incorporating a bearing within a housing for easy mounting and alignment.



## Product Overview

### Industrial-Grade Bearing Unit

The UC300 is a high-performance bearing unit designed for demanding industrial machinery applications. It integrates a precision bearing within a robust housing, facilitating simplified mounting and precise shaft alignment. Engineered for durability, this unit minimizes friction and wear to ensure smooth, efficient rotational movement across diverse mechanical systems.

## Key Features

### Suitable Applications

Conveyor Systems, Power Transmission, Industrial Machinery

## Technical Specifications

### Performance Features

- Compact form factor for space-restricted installs
- Robust construction for demanding environments
- Precisely controlled dimensions and tolerances
- Optimized for reduced friction and wear

### Design Specifications

Feature	Benefit
Housing	Integrated design for easy mounting
Alignment	Simplifies mechanical system setup
Materials	Durable composition for long service life