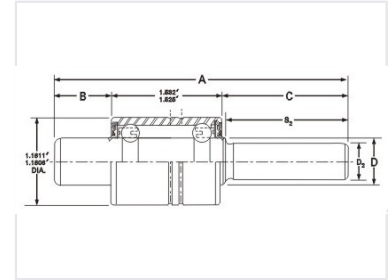


Bearing Component with Technical Dimensions

This is a bearing component designed for specialized applications. It features specific dimensions, including diameters and thicknesses, as indicated in the technical drawing.



Overview

Precision Engineered Bearing Component

This high-precision bearing component is designed for demanding industrial applications requiring exact tolerances. The assembly features a robust housing with an optimized internal ball bearing arrangement to ensure smooth operation and longevity. With critical dimensions meticulously controlled, this component is suitable for integration into complex mechanical systems.

Technical Dimensions

Minimum Diameter	1.1808 in
Maximum Diameter	1.1811 in
Minimum Thickness	1.526 in
Maximum Thickness	1.532 in
Key Dimension Markers	A, B, C, S2, D2

Performance Metrics

Dimensional Tolerance

0.0003 in

Diameter Tolerance

0.006 in

Thickness Tolerance