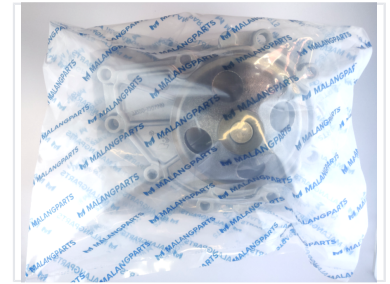
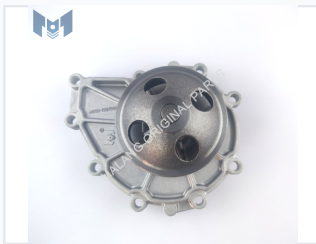


Automotive Engine Water Pump

This high-performance water pump is designed for efficient engine cooling. It provides optimal coolant flow to maintain consistent engine temperature and prevent overheating.



ADDITIONAL IMAGES



Product Overview

High-Performance Automotive Cooling

This automotive engine water pump is engineered to maintain optimal engine temperatures by ensuring continuous coolant circulation through the radiator. Constructed from durable steel materials, it effectively drives coolant to dissipate heat and prevent overheating. It is designed to meet rigorous automotive standards for reliability and long-term performance in various engine configurations.

Technical Specifications

Material	Steel
Net Weight	2.6 Kg

Key Features

Core Functions

- Drives coolant circulation
- Engine heat dissipation
- Radiator cooling system maintenance
- Overheating prevention