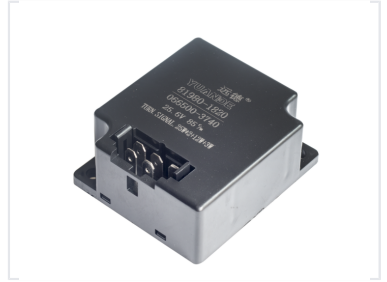


Automotive Electronic Flasher Relay

This electronic flasher relay is designed for automotive applications. The controller regulates the flashing frequency of turn signals and hazard lights.



ADDITIONAL IMAGES



Product Overview

Automotive Electronic Flasher Relay

This electronic flasher relay is a specialized controller designed for automotive turn signal and hazard light systems. Engineered for reliability, it features high-power relay components and integrated short-circuit protection to ensure consistent performance in demanding vehicle environments. The unit is built with a durable, compact housing and mounting flanges, facilitating secure installation and seamless integration into existing automotive electrical wiring.

Technical Specifications

Operating Voltage	25.6 V
Duty Cycle	85 %
Turn Signal Configuration	25W+2+12W+3W
Protection Features	Short Circuit Protection, High Power Relay

Design & Construction

Housing Material	Durable black plastic
Installation	Mounting flanges for secure fit
Connector	Multi-pin connector

Compatibility

Applications

- Automotive turn signal systems
- Hazard light control
- Vehicle electrical systems