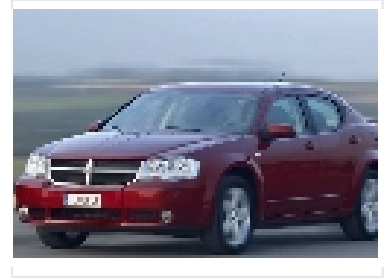


# Automobile Component for Dodge Feng Zhe 2.4 SXT

This automobile component is designed for the Dodge Feng Zhe 2.4 SXT model. It is crafted from high-quality materials to ensure durability and optimal performance.



## Product Overview

### Performance Component Overview

This automobile component is precision-engineered specifically for the 2009 Dodge Feng Zhe 2.4 SXT model. Designed to ensure seamless integration and reliable functionality, it helps maintain the vehicle's optimal performance standards. Crafted from high-quality, durable materials, this part is built for longevity and contributes to the overall efficiency of the vehicle's system, ensuring a smooth driving experience.

## Compatibility

Model Year	2009
Vehicle Model	Dodge Feng Zhe 2.4 SXT

## Key Features

Key Attributes	Optimal Performance, High-Quality Material, Durable Design, Seamless Integration
----------------	--