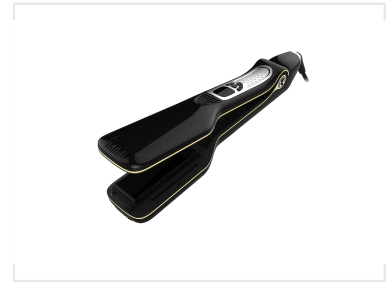


Automatic Steam Hair Straightener Comb with LED Display

This professional hair straightener comb features nano titanium plates and an LED display. It utilizes automatic steam technology to hydrate hair during styling.



Product Overview

Professional Steam Straightening Technology

This automatic steam hair straightener comb combines advanced steam and ion functionality to deliver efficient, healthy hair straightening. Designed for professional use, it features a 3D combing system that ensures optimal pressure for ultimate smoothness. With its ergonomic design and rapid heating capabilities, it is built to save styling time while accommodating all hair types.

Key Features

Safety Features

- Temperature lock to prevent accidental changes
- Double plate construction

Core Technologies

Steam Function, Ion Technology, 3D Combing System, Rapid Heating

Temperature Settings

5 levels

Display & Interface

Display Type

LCD Screen

Usability

Yes