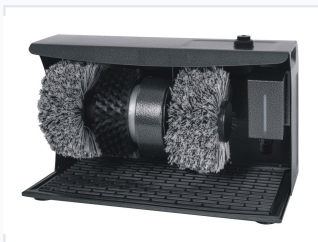


# Automatic Shoe Polishing Machine with Dual Brushes

This automatic shoe polisher is designed for convenient shoe care. It features dual rotating brushes and a built-in polish dispenser to maintain shine and extend the life of leather shoes.



## ADDITIONAL IMAGES



## Overview

### Professional Automatic Shoe Polishing Solution

This automatic shoe polishing machine is engineered to provide efficient and convenient footwear care in high-traffic environments such as offices, hotels, and homes. Featuring a powerful motor and specialized dual-brush system, it ensures a thorough clean and long-lasting shine for leather shoes. Its user-friendly design includes an integrated polish dispenser and a simple on-off control for reliable, everyday operation.

## Technical Specifications

### Power Rating

**230 V**

Voltage

**120 W**

Power Output

Model ID

UG600

## Hardware & Features

### Brush System

- 2x Detachable soft brushes
- 1x Hard brush

Key Features

Replaceable polish bottle, On-off power switch, Automatic operation

## Logistics

### Loading Capacity

Container Type	Quantity
20ft	720
40ft	1462
40ft HQ	1706