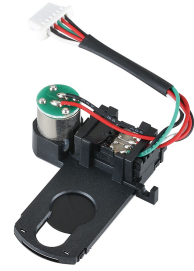


Automatic Iris Lens for Surveillance Cameras

This automatic iris lens is designed for surveillance cameras. It features a compact design with a lever arm and connector for easy integration.



Product Overview

Professional Surveillance Lens

The VPIRIS23 is a precision-engineered automatic iris lens designed specifically for surveillance camera integration. It features a compact form factor with an integrated motor and connector, allowing for seamless installation and reliable operation in varying lighting conditions. This lens is built for durability and consistent performance in security applications, utilizing high-quality glass elements for optimal image clarity.

Electrical Specifications

IRIS Resistance	28.5 \odot
IR Voltage	3.5 V
Max Voltage Range	6V Max
IR Resistance	100 \odot

Optical Specifications

Max Effective Aperture	7 mm
Quantity of Glass Elements	2
Glass Thickness	0.21

Performance Metrics

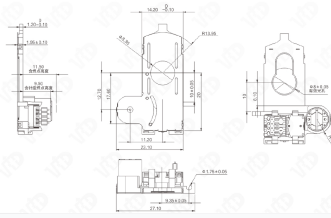
Rated Test Conditions

2.6 V Min Voltage	3.8 V Max Voltage	160 PPS Pulse Rate
-----------------------------	-----------------------------	------------------------------

Dimensions

零件号	规格名称	材料	重量 (g)	长度 (mm)	直径 (mm)	针脚间距 (mm)	针脚高度 (mm)	针脚直径 (mm)	针脚长度 (mm)
VP0022	自动对焦镜头	铝合金	0.15	27.10	18.30	1.75	11.50	0.5	2.0

规格书 Specification



Technical drawing and specification sheet detailing dimensions and electrical parameters.

Key Dimensions Table

Feature	Value
Height (including solder joint)	11.50 mm
Height (including needle base solder)	9.50 mm
Diameter 1	18.30mm
Diameter 2	11.75mm
Length 1	27.10 mm
Length 2	23.10 mm