

Arrow Marked Convex Push Button

This arrow marked convex push button is designed with a spring return mechanism. It is ideal for use in control panels, machinery, and other equipment requiring a momentary switch function.



Overview



Specializing in production of buttons and indicators since 1997

Durable plastic construction with clear arrow marking for intuitive industrial operation.

Industrial Control Push Button

The arrow-marked convex push button is a robust industrial control component designed for reliable signal and interlocking operations. Constructed from zinc alloy and high-grade anti-flame plastic, it offers durability in demanding environments such as distribution cabinets and control panels. This spring-return mechanism ensures consistent performance with a long mechanical and electrical lifespan, complying with international safety standards including CE, RoHS, and IEC specifications.

Technical Specifications

Rated Insulation Voltage	AC 600V (50Hz/60Hz)
Conventional Heating Current	10 A
Insulation Resistance	e5M©
Contact Resistance	d25m©
Withstand Voltage	AC 2.5KV/min

Performance Metrics

Mechanical Life

100000 ops

Pushbutton Cycles

Electrical Life

50000 ops

Pushbutton Cycles

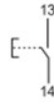
Physical Characteristics



LAY5-EL3341

Convex button
spring return
Marked

N/O

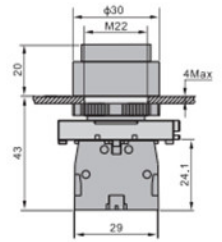


Green LAY5-EL3361

Green LAY5-EL3311

White or LAY5-EL3341

Black or LAY5-EL3351



Detailed dimensions including mounting hole size and overall profile for panel integration.

Physical Dimensions

Dimension	Value
Button Diameter	43mm
Mounting Hole	M22
Overall Height	43mm
Base Width	29mm
Panel Thickness	Max 4mm

Compliance & Standards

Certifications	CE, ISO 9001, RoHS, UL, IEC 60947-5-1
----------------	---------------------------------------