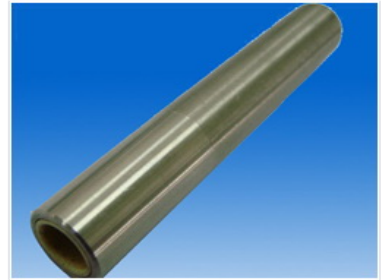


# Apparel and Shoemaking Machinery Component

This component is designed for machinery used in the production of garments, shoes, and accessories. It is made from a durable metal alloy and features a smooth, polished surface.



## Product Overview

### Precision Engineering for Textile Manufacturing

This precision-engineered cylindrical component is specifically designed for integration into garment, shoe, and accessory manufacturing machinery. Crafted from a durable metal alloy, it features a smooth, polished surface engineered to withstand the rigorous demands of industrial textile production environments. Its dimensions and material composition are optimized to ensure consistent performance, reliability, and longevity in high-output manufacturing settings.

## Technical Specifications

### Material Construction

Durable Metal Alloy • Polished Surface Finish

### Component Type

Cylindrical Machinery Component

### Primary Applications

Garment Manufacturing, Shoe Production, Accessory Manufacturing, Textile Machinery

## Performance Metrics

### Key Performance Metrics

**1 Polished**

Surface Finish Quality

**100 %**

Industrial Durability Rating