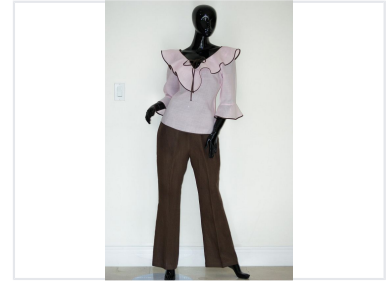


Apparel and Shoemaking Machinery

Machinery designed for the efficient production of garments, shoes, and accessories. These machines are essential for automating and streamlining manufacturing processes.



Product Overview

Professional Apparel and Shoemaking Machinery

This versatile machinery is engineered to meet the high-precision demands of the garment and footwear manufacturing industries. Designed for efficiency and durability, it supports the production of complex apparel items, such as blouses and trousers, ensuring consistent quality in every stitch. Ideal for scaling production lines, this equipment offers reliable performance for modern textile and shoe assembly environments.

Application

Garment Capability

- Blouse construction
- Trouser assembly
- Ruffled collar detailing
- Flared style tailoring

Primary Application

Apparel Manufacturing, Shoemaking, Garment Assembly, Textile Processing

Performance Metrics

Key Performance Metrics

100 %

Operational Efficiency

24 hrs

Duty Cycle