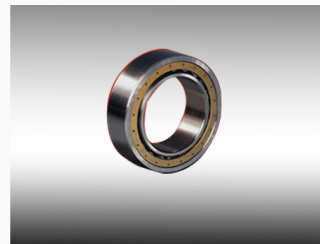


# Angular Contact Ball Bearing

Angular contact ball bearings are engineered to handle combined radial and axial loads, offering optimal performance in critical rotating equipment. Featuring optimized internal geometry and premium materials, these bearings ensure smooth operation and extended service life.



## ADDITIONAL IMAGES



## Overview

### High-Performance Angular Contact Ball Bearings

These angular contact ball bearings are engineered to support combined radial and axial loads, making them ideal for high-speed and high-precision applications. Designed with axially asymmetric races, they provide excellent rigidity and load-carrying capacity, suitable for environments ranging from machine tools to high-speed turbines. Available in various materials including steel and ceramic, these bearings offer long service life, low noise, and reliable operation under demanding industrial conditions.

## Technical Specifications

<b>Bore Size Range</b>	10 mm
<b>Maximum Bore Size</b>	200 mm
<b>Outside Diameter Range</b>	22 - 420 mm
<b>Precision Ratings</b>	P0, P6, P5, P4, P2
<b>Material Options</b>	Steel GCr15, Stainless Steel, Ceramic (Silicon Nitride), Brass

## Design & Configuration

### Cage Material Options

Bearing Steel • Brass • Ceramic • Synthetic Resins

<b>Bearing Type</b>	Angular Contact Ball Bearing
<b>Number of Rows</b>	Single Row
<b>Seals Type</b>	Open
<b>Raceway Type</b>	Spherical

## Performance

### Load Capability

- Radial Load
- Axial Load
- Combined Radial and Axial Loads

### Contact Angle Range

10 to 45 degrees