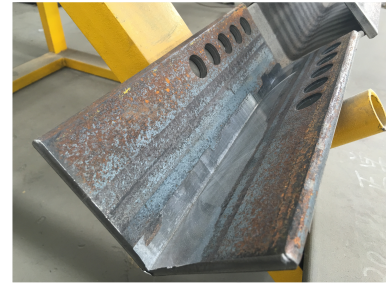


# Angle Root Milling Machine

This angle root milling machine is designed for milling angle roots with precision and efficiency. The machine provides a robust and reliable solution for demanding metal cutting applications across various industrial sectors.



## ADDITIONAL IMAGES



## Product Overview

### High-Efficiency Angle Root Milling

The Angle Root Milling Machine is a precision-engineered industrial tool designed for consistent, high-accuracy milling of angle roots. Built for demanding metal-cutting environments, this machine features robust steel construction to ensure stability and minimize vibration during operation. With automatic workpiece positioning and versatile processing length capabilities, it serves as a reliable, high-performance solution for modern manufacturing lines.

## Technical Metrics

### Featured Performance

**10 KW**

Total Power (TGQ200)

**400 rpm**

Max Cutting Speed

**2 pcs**

Feeding Motors

### Model Specifications

Feature	TGQ200	TGQ250
Total Power	10KW	7KW
Single-spindle power	4KW	3KW
Cutting Speed	150^400pm	0^400pm
Diameter of cutting plate	100mm	120mm
Feeding speed	230^500mm/min	0^500mm/min

## Operations

### Operational Features

Automatic workpiece positioning, Unlimited processing length, Digital control panel, 380V Power supply

## Dimensions

Machine Dimensions

2250 × 1290 × 1900 mm