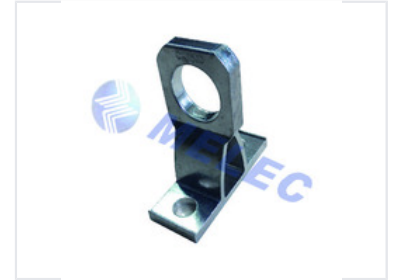


Anchor Bracket for Electrical Cables

This anchor bracket is designed for securing wires and cables in electrical power systems. It provides a strong anchoring point for the stability and longevity of electrical installations.



Product Overview

JBEC-X Anchor Bracket

The JBEC-X anchor bracket is a high-performance component engineered for electrical power transmission and distribution systems. Designed for securing wires and cables, this bracket provides a robust anchoring point that ensures the stability and longevity of electrical installations. Constructed from corrosion-resistant extruded aluminium alloy, it offers superior mechanical strength to withstand demanding environmental conditions.

Technical Specifications

Type	Failure Load (kN)	Pack (pcs)
Technical diagram detailing the anchor bracket specifications and load parameters.		

Standard

NF C 33-041

Material

Corrosion resistant extruded aluminium alloy

Performance Data

JBEC-X1	15(45° test) 21.75(18° test)	60
---------	------------------------------	----

Visual representation of load test performance at 18° and 45° angles.

Load Test Performance

Test Condition	Load Value (kN)
45° test	15
18° test	21.75

Compatibility & Usage

Compatible Components	JBGA, JBGB
-----------------------	------------