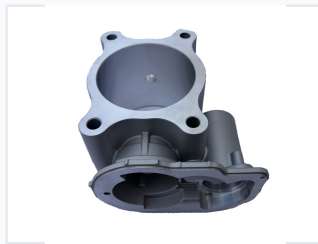


# Aluminum Throttle Plate Housing for Auto Engines

This aluminum throttle plate housing is designed for automotive engine applications. It is precision-machined to ensure optimal airflow, durability, and seamless integration with throttle bodies and intake manifolds.



## ADDITIONAL IMAGES



## Product Overview

### Precision-Engineered Throttle Housing

This aluminum throttle plate housing is designed for high-performance automotive engine applications. Manufactured from a high-grade aluminum alloy, it offers excellent corrosion resistance and durability in demanding operating environments. The unit features precision machining to ensure optimal airflow and throttle response, with multiple mounting points for versatile integration into modern engine systems.

## Material and Standards

### Quality Compliance

ISO 9001:2000 • ISO 9000:1998

### Construction Materials

Aluminum Alloy

## Application Compatibility

### Industry Applications

- Automotive Manufacturing
- Motorcycle Manufacturing
- Hydraulic Control Systems
- Aircraft Manufacturing
- Food Machinery
- Textile Machinery

## Technical Features

### Core Design Specs

**1 Precision Machined**

Surface Finish