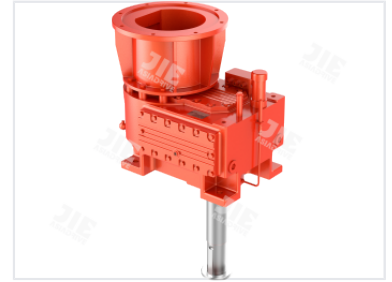


Air-Cooled Gear Unit

This air-cooled gear unit offers high reliability and load capacity. Its modular design optimizes intensity and reduces noise, making it suitable for power equipment, port machinery, and chemical mixing applications.



Product Overview

Industrial Performance

This air-cooled gear unit is engineered for demanding industrial power transmission applications. It features a robust construction designed to withstand rigorous operating environments while maintaining optimal thermal efficiency. The integrated cooling system ensures consistent performance and extended service life under heavy load conditions.

Technical Specifications

Key Performance Metrics

| | | |
|----------------------------|------------------------------|-----------------------------------|
| 14 :1 Gear Ratio | 228 kW Input Power | 21000 N.m Output Torque |
|----------------------------|------------------------------|-----------------------------------|

| | |
|-------|-----|
| Model | 166 |
|-------|-----|

Design Features

Cooling System

Air-Cooled