

Adjustable Car Safety Belt Extender

This adjustable car safety belt extender adds length to existing belts for enhanced comfort and safety. It fits most types of buckles and is ideal for car seats, larger individuals, and service personnel.



ADDITIONAL IMAGES

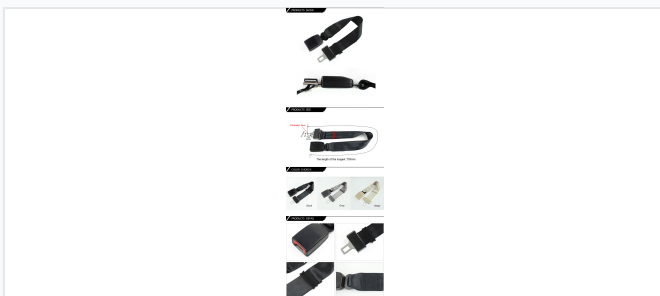


Overview

Universal Adjustable Safety Belt Extender

This high-quality adjustable seat belt extender is designed to increase the reach and comfort of existing vehicle safety belts, making it an ideal solution for infants in baby seats, individuals with limited mobility, or service personnel wearing bulky equipment. It is compatible with a wide range of vehicles, including cars, vans, school buses, and RVs, ensuring a secure and compliant fit. Constructed with durable nylon webbing and a robust metal buckle, it offers a reliable safety upgrade for various seating configurations.

Technical Dimensions



Available in Black, Grey, and Beige with a maximum length of 700mm and 3mm thickness.



The extender features a 25.6mm wide metal tongue and 47mm wide durable webbing.

Adjustable Length

470 mm

Minimum Length

675 mm

Maximum Length

Webbing Width	47 mm
Metal Tongue Thickness	3 mm
Metal Tongue Width	25.6 mm

Certifications & Standards

Safety Certifications

ISO9001:2015, DOT, CCC, ECER16, FMVSS 302

Product Details

Color Options

Black • Grey • Beige

Item Number

FEA046

Fixing Type

2 Points

Application

Vehicle Compatibility

- Car Seat Belts
- Bus Seat Belts
- Truck Seat Belts
- Engineering Vehicle Safety Belts
- Vans
- School Buses
- RVs

Supported Belt Functions

- Static 2 Point Seat Belt
- Static 3 Point Seat Belt
- 2 Point Retractor Seat Belt
- 3 Point Retractor Seat Belt
- 4 Point Seat Belt
- 5 Point Seat Belt

Supply Chain & Logistics

Logistics Information

Detail	Value
Packing	Neutral packing or customer required
Nearest Ports	Ningbo / Shanghai Port
Minimum Order Quantity	50 pcs
Delivery Time	10-15 Days
Shipping Options	Express, Air, Sea