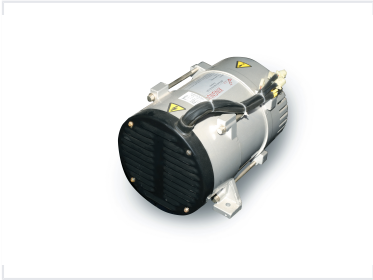


AC Synchronous Brush Alternator

This AC synchronous generator is engineered for power generation. The alternator converts mechanical energy into AC electrical energy using brushes to contact slip rings.



ADDITIONAL IMAGES



Overview

High-Efficiency AC Synchronous Alternator

This KT series AC synchronous generator is engineered for reliable power generation across a range of industrial and commercial applications. Featuring a compact and lightweight design, it incorporates a low harmonic winding system to ensure stable energy output. Equipped with a brush AVR self-excitation control system, this alternator provides consistent performance and optimized efficiency for demanding power needs.

Performance Specifications

Power Output Range

| | |
|------------------------------|-------------------------------|
| 2 kW Minimum Power | 20 kW Maximum Power |
|------------------------------|-------------------------------|

Operating Frequency

50 Hz

Electrical Configuration

Voltage Output

- 110V (Single Phase)
- 220V (Single Phase)
- 220V (Three Phase)
- 380V (Three Phase)

Supported Phase Configurations

Single Phase, Three Phase

Technical Features

Key Technical Features

Brush AVR Self-Excitation • Low Harmonic Winding • Compact Design • Lightweight Construction • Reliable Control System