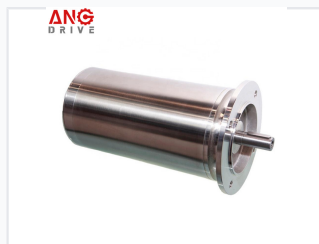
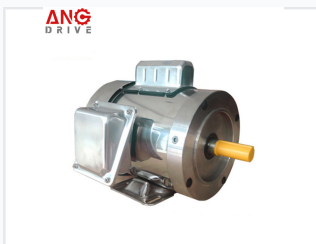


# AC Stainless Steel Gear Motor for Submersible Applications

This AC stainless steel gear motor is designed for submersible applications. It features a smooth, stainless steel exterior and is ideal for use in harsh and corrosive environments.



## ADDITIONAL IMAGES



## Overview



### High-Performance Submersible Gear Motor

This AC stainless steel gear motor is specifically engineered for demanding environments, featuring a completely smooth, corrosion-resistant surface ideal for food processing and frequent washdown. With an IP69 protection rating, it ensures reliable underwater performance and durability in highly corrosive or outdoor settings. The design focuses on low noise, low vibration, and a lightweight build to provide efficient power transmission for specialized industrial applications.

## Technical Specifications

|                         |                           |
|-------------------------|---------------------------|
| <b>Protection Class</b> |                           |
| IP69                    |                           |
| <b>Power Range</b>      | 1/4HP ~ 30HP              |
| <b>Voltage</b>          | (208-230) 230/460V        |
| <b>Phase</b>            | Single Phase, Three Phase |
| <b>Poles</b>            | 2, 4, 6, 8                |
| <b>Cooling Method</b>   | TENV, TEFC                |

## Design & Construction

### Primary Material

**304**

Stainless Steel Grade

### Frame Sizes

- IEC 63-90 B5 B14
- NEMA 56
- 140T-280

### Mounting Types

B14, B3, B5, B35, B34

## Performance Features

### Key Features

- All external surfaces stainless steel
- Low noise and low vibration
- Lightweight construction
- Completely smooth surface for hygiene

## Operating Environment

### Ambient Temperature Range

-15 ~ +40 °C

### Maximum Altitude

1000 m

### Ideal Applications

Food Processing, Packaging, Outdoor, Corrosive Environments, Washdown Areas