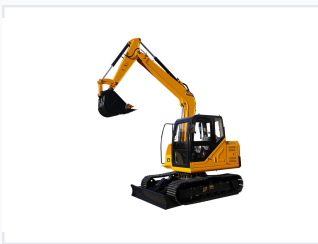


## 7.5 Ton Crawler Excavator

This 7.5-ton crawler excavator is designed for various construction and excavation tasks. Its compact design allows for maneuverability in tight spaces, making it suitable for urban construction sites.



### ADDITIONAL IMAGES



### Overview

#### High-Performance 7.5 Ton Crawler Excavator

This 7.5-ton crawler excavator is engineered for versatility and power in diverse construction and excavation environments. Featuring a robust hydraulic system and a reliable 58HP engine, it delivers precise control and high digging force for demanding tasks. Its compact design and stable crawler undercarriage ensure excellent maneuverability and performance in both confined urban spaces and rugged terrain.

### Engine & Performance

#### Engine Power

**58 HP**  
Power

**42.4 kw**  
Output

#### Engine Details

Attribute	Specification
Emission Standard	Tier 3/ Stage III
Cylinders	4
Rated Speed	2000 rpm

#### Max Digging Force

**56 KN**  
Bucket

**38 KN**  
Arm

## Operational Capabilities

### Working Range

Metric	Value	Unit
Max Digging Height	7023	mm
Max Dumping Height	5195	mm
Max Digging Depth	3898	mm
Max Digging Radius	6182	mm

Standard Bucket Capacity	0.28 m3
Hydraulic System Pressure	27 Mpa

## Dimensions & Weight

Overall Dimensions (L*W*H)	6054mm * 2216mm * 2672mm
Machine Weight	7500 kg
Minimum Ground Clearance	375 mm

## Track System

### Track Configuration

- Track Shoe Width: 450mm
- Track Shoes per side: 39pcs
- Upper Rollers per side: 1
- Bottom Rollers per side: 5

Max Travel Speed	2.5 / 4.5 km/h
------------------	----------------

## Capacities

### Fluid Tank Capacities

**120 L**

Fuel Tank

**100 L**

Hydraulic Oil