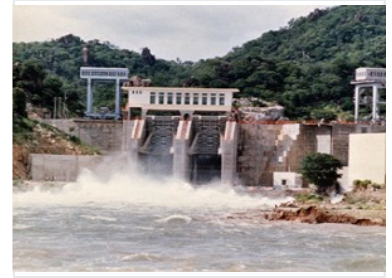


# 72 MW Hydroelectric Power Station

This hydroelectric power station has an installed capacity of 72MW. Its reservoir has a total storage of 6,020,000,000 m<sup>3</sup> and generates power annually.



## Overview

### Hydroelectric Power Station Overview

This hydroelectric power station is a significant water and electricity infrastructure project. It features a robust design with a total installed capacity of 72 MW, serving as a critical energy source. The facility includes a substantial reservoir system, demonstrating large-scale water conservation and power generation capabilities.

## Technical Specifications

### Installed Capacity

**72 MW**

Installed Capacity

**Total Reservoir Storage** 6020000000 m<sup>3</sup>

**Annual Power Generation** 322000000 KWh

## Project Timeline

### Key Project Dates

Milestone	Date
Project Start	August 1978
First Unit Electricity Generation	December 1982
Project Completion	1984