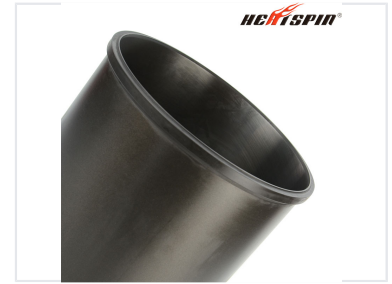


6WF1 Engine Cylinder Liner

The 6WF1 Cylinder Liner is a precision-engineered component for automotive engines. It provides a wear-resistant surface for piston rings, contributing to efficient combustion and reduced oil consumption.



ADDITIONAL IMAGES



Product Overview

Precision Engine Component

This cylinder liner is a precision-engineered component designed specifically for 6WF1 engine applications. Constructed from high-quality iron material, it features a phosphated surface treatment and a specialized firewall design to ensure optimal durability and wear resistance. It provides a reliable surface for piston rings, facilitating efficient combustion, proper heat dissipation, and reduced oil consumption for engine longevity.

Technical Specifications

Bore Diameter	147 mm
Total Height	267 mm
Flanger Diameter	158.3 mm
Cylinder Configuration	6

Material & Construction

Material	Iron
Surface Treatment	Phosphated, Firewall

Compatibility

OEM Reference Number	1-11261333-2
Engine Model	6WF1