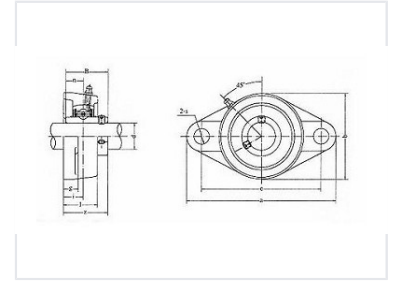


6900 Series Deep Groove Ball Bearing

This deep groove ball bearing is part of the 6900 series. It is engineered for applications requiring radial load support.



Overview

6900 Series Deep Groove Ball Bearings

The 6900 series deep groove ball bearings are engineered for high-performance applications requiring reliable radial and axial load support. Designed with precision, these bearings offer smooth operation and consistent performance in various industrial environments. Their robust construction ensures durability and efficient functionality, making them an essential component for machinery requiring precise rotational movement.

Technical Specifications

Series	6900 Series
Bearing Type	Deep Groove Ball Bearing
Key Features	Radial Load Support, Axial Load Capacity, Precision Engineering