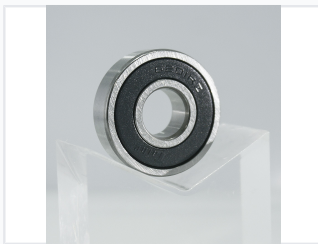


# 6201-2RZ Deep Groove Ball Bearing

This high-precision 6201-2RZ ball bearing is designed for industrial and mechanical applications. It features deep-groove geometry, enabling high speeds and support for both radial and axial loads.



## ADDITIONAL IMAGES



## Product Overview

### High-Performance 6201-2RZ Bearing

The 6201-2RZ deep groove ball bearing is engineered for smooth operation in high-speed and high-temperature industrial environments. Featuring rubber seals on both sides, this component effectively retains lubricant while protecting internal parts from contaminants. Its robust design supports both radial and axial loads, making it an ideal choice for electric motors, gearboxes, and general rotating machinery.

## Technical Specifications

### Precision Levels (ABEC)

ABEC1 (P0) • ABEC3 (P6) • ABEC5 (P5) • ABEC7 (P4) • ABEC9 (P2)

### Internal Clearance

- C2
- C0
- C3
- C4
- C5

### Vibration Grades

- Z1V1
- Z2V2
- Z3V3
- Z4V4

### Available Series

600 Series, 6000 Series, 6200 Series, 6300 Series, 6400 Series

## Material & Construction

### Key Performance Features

- High Temperature Resistant
- High Speed Operation
- Low Noise
- Rubber Sealed (2RZ)

### Material Composition

Carbon Steel, Chrome Steel, Stainless Steel, Plastic, Ceramic