

# 60mm Mushroom Head Spring Return Push Button Switch

This 60mm mushroom head push button switch is designed with a spring return mechanism. The metal construction ensures durability and reliability in industrial environments.



## ADDITIONAL IMAGES

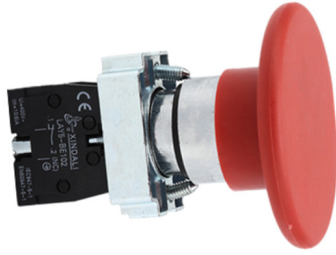


## Product Overview

### Industrial Mushroom Head Push Button

The 60mm mushroom head spring return push button switch is engineered for demanding industrial control applications. Constructed with a durable zinc alloy body and high-grade anti-flam plastic, this switch is designed to withstand mechanical wear and harsh environmental conditions. It features a large, highly visible actuator for reliable operation in emergency stop or control circuit configurations, ensuring safety and responsiveness in machinery and control panels.

## Technical Specifications



Specializing in production of buttons and indicators since 1997

Robust metal construction designed for industrial durability and reliable electrical contact.

### Performance Metrics

**600 V**

Rated Insulation Voltage

**10 A**

Heating Current

**22 mm**

Mounting Hole Diameter

### Electrical Properties

Parameter	Value
Insulation Resistance	$\geq 50 \text{M}\Omega$
Contact Resistance	$\leq 25 \text{m}\Omega$
Dielectric Strength	AC 2.5KV/min
Voltage Wave Tolerance	$\pm 20\%$

### Operational Life

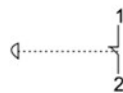
- Mechanical Life: 1,000,000 operations
- Electrical Life: 5,000,000 operations
- Continuous Working Life: 100,000 hours

## Design & Construction

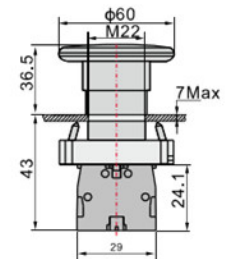


LAY5-BR42

Emergency stop  
Spring return N/C



- Black  $\Phi 60$  LAY5-BR22
- Green  $\Phi 60$  LAY5-BR32
- Red  $\Phi 60$  LAY5-BR42



Dimensional drawing for installation, featuring a 22mm mounting hole and 60mm head diameter.

### Physical Characteristics

- Head Diameter: 60mm
- Action Type: Spring Return (Momentary)
- Main Material: Zinc Alloy & Anti-flam Plastic
- Contact Configuration: 1NC (Normally Closed)

## Compliance & Standards

### Certifications

CE, ISO 9001, RoHS, UL, IEC 60947-5-1